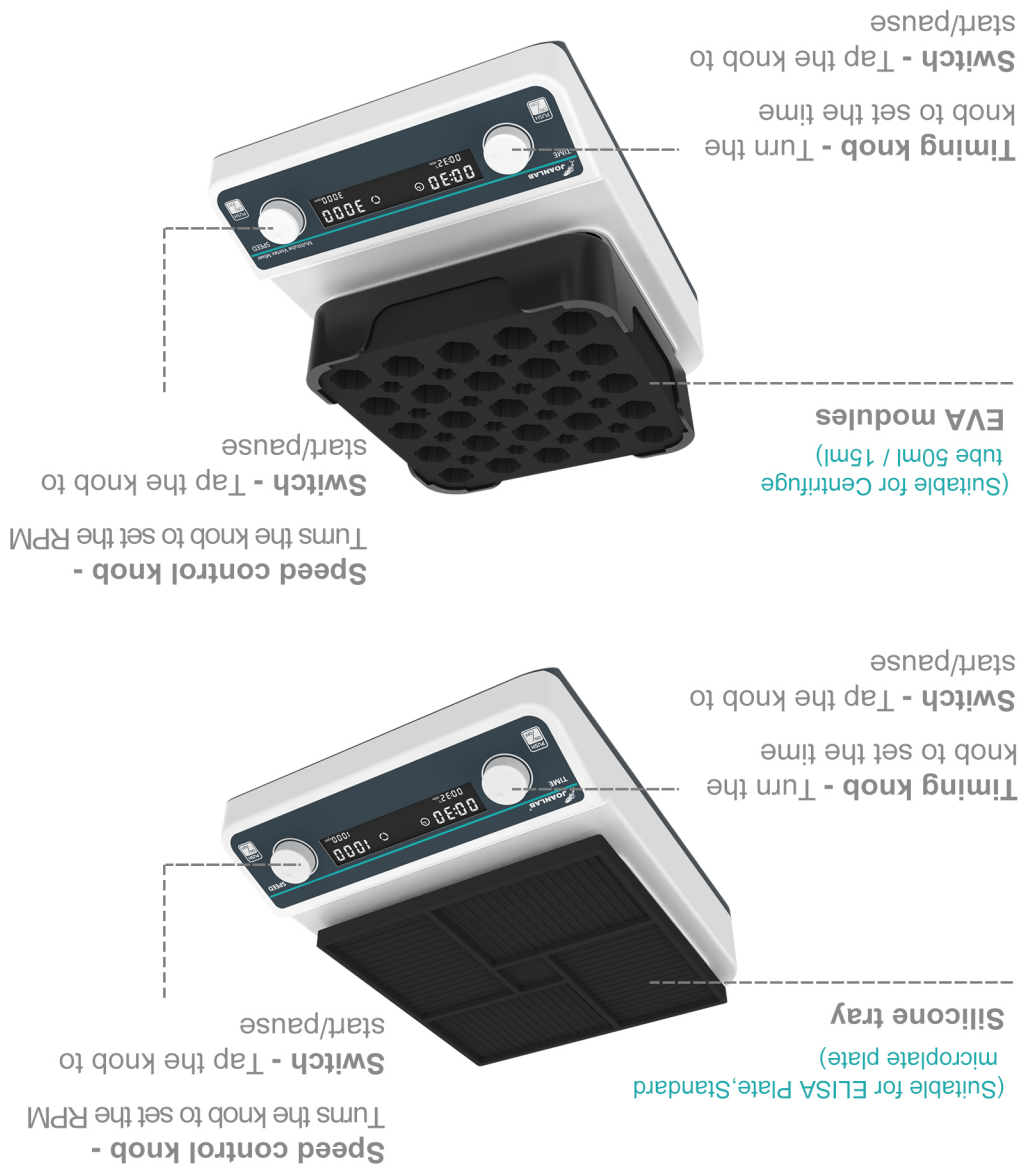




## User manual

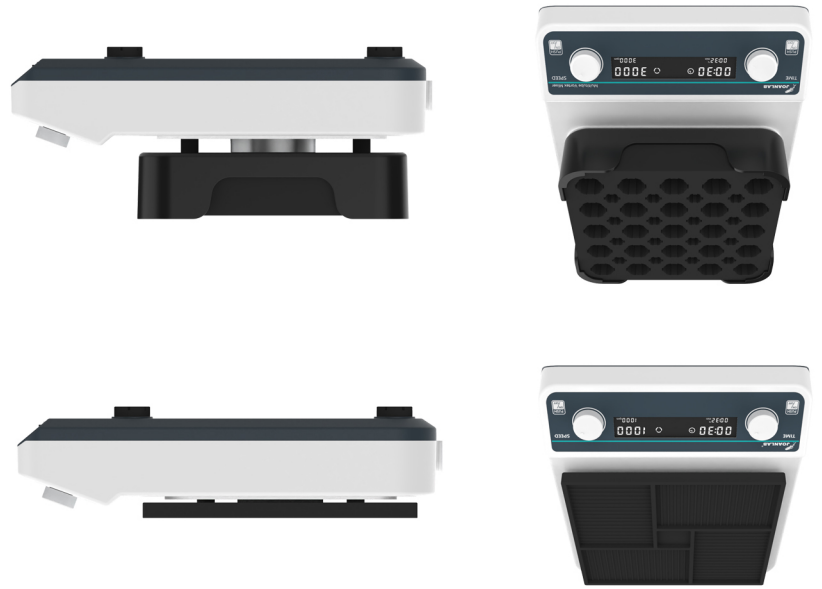
Tel: 86-0572-2266665  
 Web: www.joanlab.cn  
 E-mail: info@joan-lab.com  
 NO.181 Gangfeng Road, Wuxing District, Huzhou City,  
 Zhejiang Province, China

- 2 -



### III: Product introduction

- 1 -



### II: Product overview

JOANLAB multi tube vortexer adopts international advanced design concepts and manufacturing technology, its appearance is smooth and beautiful, the structure is compact and firm, it has the advantages of high versatility, simple operation and so on, which is a rare instrument for scientific research experiments.

### I: Product brief

## IV: Product data

Model	VM-600Max	VM-600
Product name	Multi Tube Vortex Mixer	Multi Tube Vortex Mixer
Picture		
Motor	Brushless Motor	Brushless Motor
Horizontal gyration amplitude	4 mm	3 mm
RPM range	1500-3000 rpm	500-1200 rpm
RPM increment	10 rpm	10 rpm
Timing range	1min-8h	1min-8h
Handling range	Centrifuge tube: 50ml*25+15ml*16 Centrifuge tube:15ml*49 / Blood tube: 10ml*49 Blood tube: 2/5ml*49	ELISA Plate / Tissue Culture Plate*4
Power	30W	20W
Voltage	AC 110-220V	AC 110-220V
Dimension	355 * 260 * 145 mm	355 * 260 * 95 mm

## V: Correct usage

/// Basic usage

### Application

> Widely used in the fields of cell and molecular biology, microbiology and immunology.

### Usage

- > The microplate shaker can be used for various experiments such as immunoassays and staining experiments. It can be used in a low room temperature environment or in an incubator. It is mainly used for mixing and shaking of solutions such as ELISA plate and cell culture plate.
- > The multi tube vortex mixer is an ideal automated tool for sample catalysis, mixing and storage, etc. It can mix and culture various common centrifuge tubes.

- 3 -

## Delivery list

- > Multi Tube Vortex Mixer or Microplate Shaker
- > Power cable
- > User's manual



- 5 -

## Steps for usage

### VM600Max

- > Place the vortexer on a flat surface which will not easily shake;
- > **Gently press both sides of the vortexer to make the feet of sucker adhere to the workbench;**
- > Plug it in and turn it on ;
- > Symmetrically insert the samples into the modular foam **and keep the sample tube upright;**
- > Turn the left knob to adjust the time, and turn the right knob to adjust the RPM;
- > Tap any knob to start / stop the vortexer.

### VM600

- > Place the shaker on a flat surface which will not easily shake;
- > **Gently press both sides of the shaker to make the feet of sucker adhere to the workbench;**
- > Plug it in and turn it on ;
- > Place the ELISA Plate at any station on the tray;
- > Turn the left knob to adjust the time, and turn the right knob to adjust the RPM;
- > Tap any knob to start / stop the shaker.

### ▲ Instrument using environment

- > Indoor use
- > Altitude: ≤2000m
- > The working temperature range of the instrument is +5℃~+40℃
- > The applicable temperature range of the instrument is ≤80%
- > There is no vibration and airflow that affect performance around
- > There is no conductive dust, explosive gas or corrosive gas in the surrounding air
- > Keep a safety distance of 10cm before and after the instrument is working

### ▲ Safety Precautions

- > It is strictly forbidden to unplug and plug the power connector and toggle the power button when the hands are wet with liquid!
- > It is strictly forbidden to unplug the power plug when the instrument is live!
- > It is strictly forbidden to maintain and clean the instrument when it is powered on!
- > It is strictly forbidden to install the instrument on an uneven, swaying and vibrating work surface!

- 4 -

## Product conformity certificate

Product Name :                     Vortex Mixer                    

Model number :  VM-600Max       VM-600

Production date : \_\_\_\_\_

Manufacturer : Ningbo Yinzhou Joan Lab Equipment Co., Ltd.

- 6 -